



# Snow Load Risks for Commercial Roofs

How to prevent damage when heavy snow and ice arrive.

## Measuring the Weight of Snow and Ice

The type is as important as depth



### DANGER ZONE

In areas not prone to heavy snow, if the total amount of snow and ice exceeds 20-25 psf, consider having the snow removed from your roof.



Roof equipment, parapets or roof projections over 2 feet tall, can cause snow accumulation due to drifting. This can increase loads, make roof leaks more likely and affect equipment operation.

When a taller building is adjacent to a business, snow accumulation on the lower roof near the step can produce dangerous snow loads.

ADJACENT BUILDING

## Do's and Don't's

Do

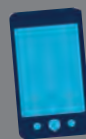


Do hire a professional contractor to safely remove heavy snow.



Do look for signs of roof or ceiling deflection suggesting overloading.

Don't



Don't hesitate! Act quickly—it's better safe than sorry.



Don't use a torch or other dangerous methods to melt the snow.