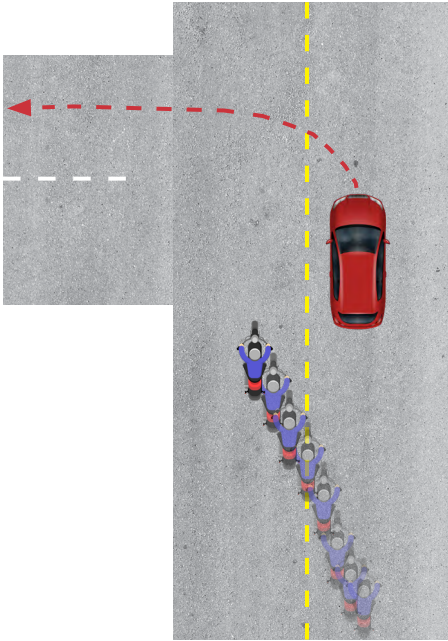


Motorcycle Awareness



- Each year, approximately **5,000 motorcyclists die in accidents**, making up **14%** of all roadway fatalities
- An additional **84,000 motorcyclists are injured**
- Per mile traveled, motorcycle fatalities occur **29 times** more frequently than car fatalities!¹



Left Turn Dangers

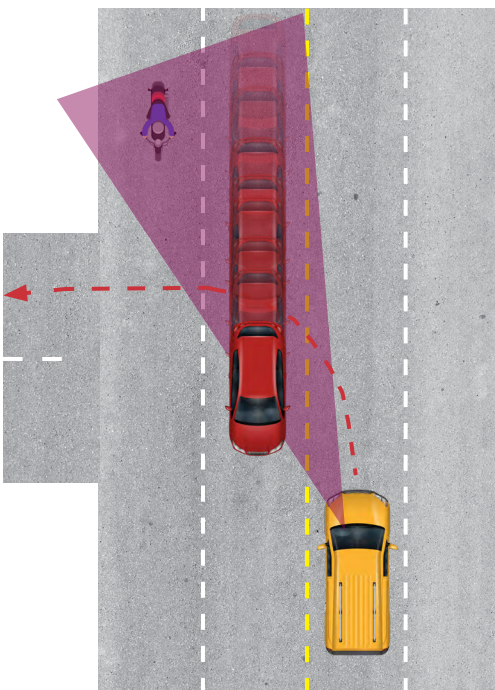
41% of all motorcycle fatalities involving another vehicle occur when the **vehicle is turning left**.¹

Primary causes:

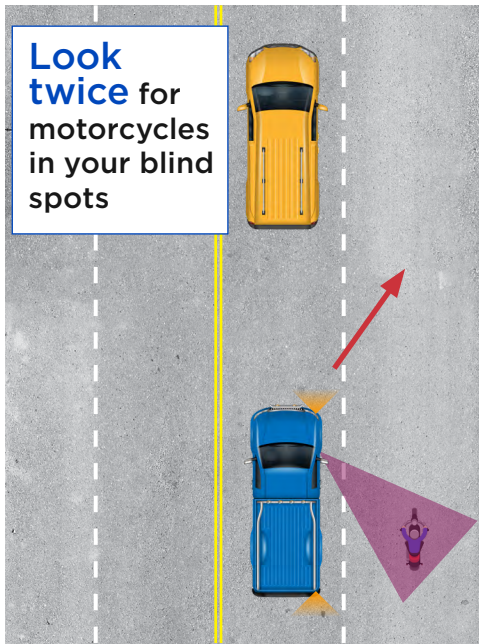
- Passing motorcycle not expected or in driver's blind spot
- Driver not signaling turn
- Oncoming motorcycle is hidden by another vehicle
- Oncoming motorcycle not visible due to small size, sun glare, etc.
- Driver misjudges how fast the oncoming motorcycle is approaching
- Driver distracted and not looking for motorcycles

What you can do:

- Look for motorcycles when making left turns!
- Always signal your turns
- If you are not sure you have enough space to turn safely, wait until the motorcycle passes
- Be 100% focused on your turn, no distractions.



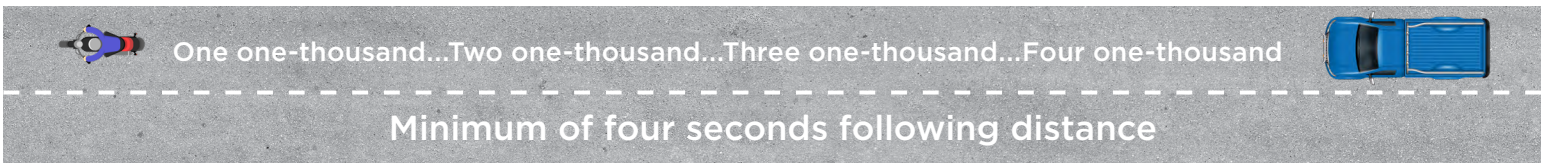
Lane Changes and Blind Spots



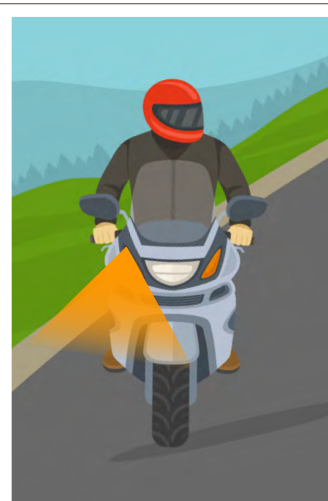
Due to their small size, motorcycles often blend into the background, making them difficult to see. Look twice!

- Always use your turn signal
- Make sure your mirrors are adjusted properly (adjust out; you should only see a small portion of your own car)
- Always turn your head to check your blind spots
- Pay attention to lane-change warning systems, even though you cannot see anything

Following Motorcycles



- Motorcycles can stop much quicker than vehicles. If you don't have an adequate gap, you are more likely to rear-end them in an emergency braking situation
- Motorcycles are more likely to brake or swerve unexpectedly when encountering road debris ahead
- Motorcycles often slow by downshifting, which does not trigger the brake light
- **Follow at least four seconds behind.** When the motorcycle passes a point along the roadway, begin counting. If you pass the point before four seconds, back off and count again
- Increase your distance further when operating larger vehicles, pulling trailers and during inclement weather



Caution:

Motorcycle turn signals often do not cancel when a lane change is completed. Be cautious about pulling out in front of a motorcycle with its turn signal on — they may not be turning!